

TECHNICAL SHEET

ENGINEERED FLOOR – DOUBLE LAYER



Quality

The quality of the XYLOPAK S.A brand products is attested by the most important authorities such as CE , FSC



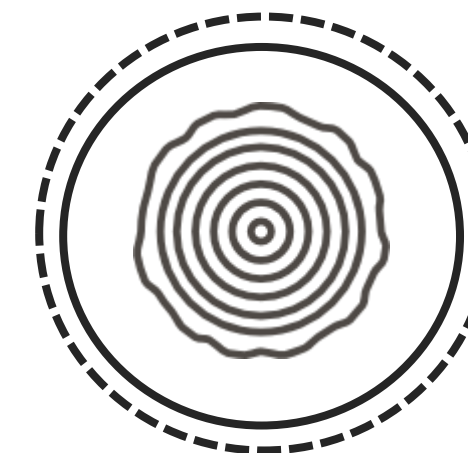
Tradition

XYLOPAK S.A industry is currently one of the most prestigious contemporary industries in the processing of wood in Greece. It was founded 50 years ago in Charopo Serres and it specializes exclusively in the production of solid oak parquet and engineered flooring, for the construction of wooden floor.



Technology

XYLOPAK's main goal is the perfection of its products . We achieve it through our perfect machinery , the constant training of our staff and the implementation of modern production methods .



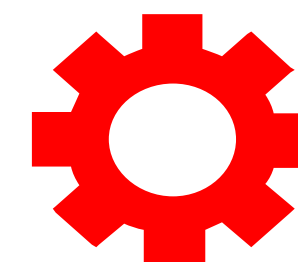
100% Wood

The wooden floors give credence to classic or modern and definitely noble and warm profile to professional venues or houses.

GENERAL CHARACTERISTICS



THE DOUBLE LAYER FLOOR is made by overlapping two layers of wood, oak and birch, with a heavy layer of 3,2 / 3,4 mm thick solid oak top layer and a high performance stability support layer of 10 mm thick **phenolic birch plywood**. Oak wood (Quercus spp.) comes from its own forestry exploitation in Romania, it is a hardwood species of deciduous tree, with high durability against aggressive factors. This new double-layer floor is made in a wide variety of colors, sizes and qualities.



FIELD OF USE

THE DOUBLE LAYER FLOOR is used for interior floors, heavy traffic, with superior selectivity requirements for outstanding design, remarkable technical performance, reliability, durability, thermal and acoustic comfort, eco-sanogenic properties.

BOTANICAL SPECIFICATIONS

Denomination	European Oak
Botanical denomination	Quercus Petraea Liebl.
Vegetation geographical area	Central and Western Europe
Wood weaving	Coarse\gross
Graining	Straight
Mass density at 12% humidity	600/800 kg/m3
Shrink	Medium
Dimensional stability	Medium-high
Hardness(Brinell penetration)	Medium-high
Durabilty (resistance to Fungus and bugs attacks)	Excellent for heartwood Mediocre for sapwood
Oxidation	Medium low , tends to conform from a yellowbrown to a Golden Yellow .



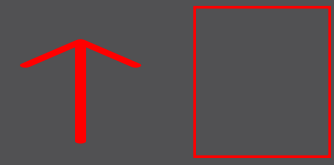
TECHNICAL QUALITY CONDITIONS

Quality standard: SR EN 13489:2003 Wood floors.
 Elements of engineered multilayer floor

Deviations %	± 0,2 length ; ± 0,1 width
Moisture content %	7...11
Durability	Class 1 (SR EN 335)
Warranty, years	20/EXTRA; 15/NATUR; 10/BR; 5/EXTRA D, installed and maintained properly, excluding natural durability
Storage & Exploitation	18-25° C, RH 45-60%. To be kept sealed in the original package until installation!
Installation & Maintenance	According to the Installation Guide & Maintenance Guide



DIMENSIONAL SPECIFICATIONS



Width

120 mm / 130 mm / 165 mm /
190 mm



Length

500 mm – 2200 mm



Thickness

13.2 mm / 13.4 mm



Top Layer (oak)

3.2 mm / 3.4 mm

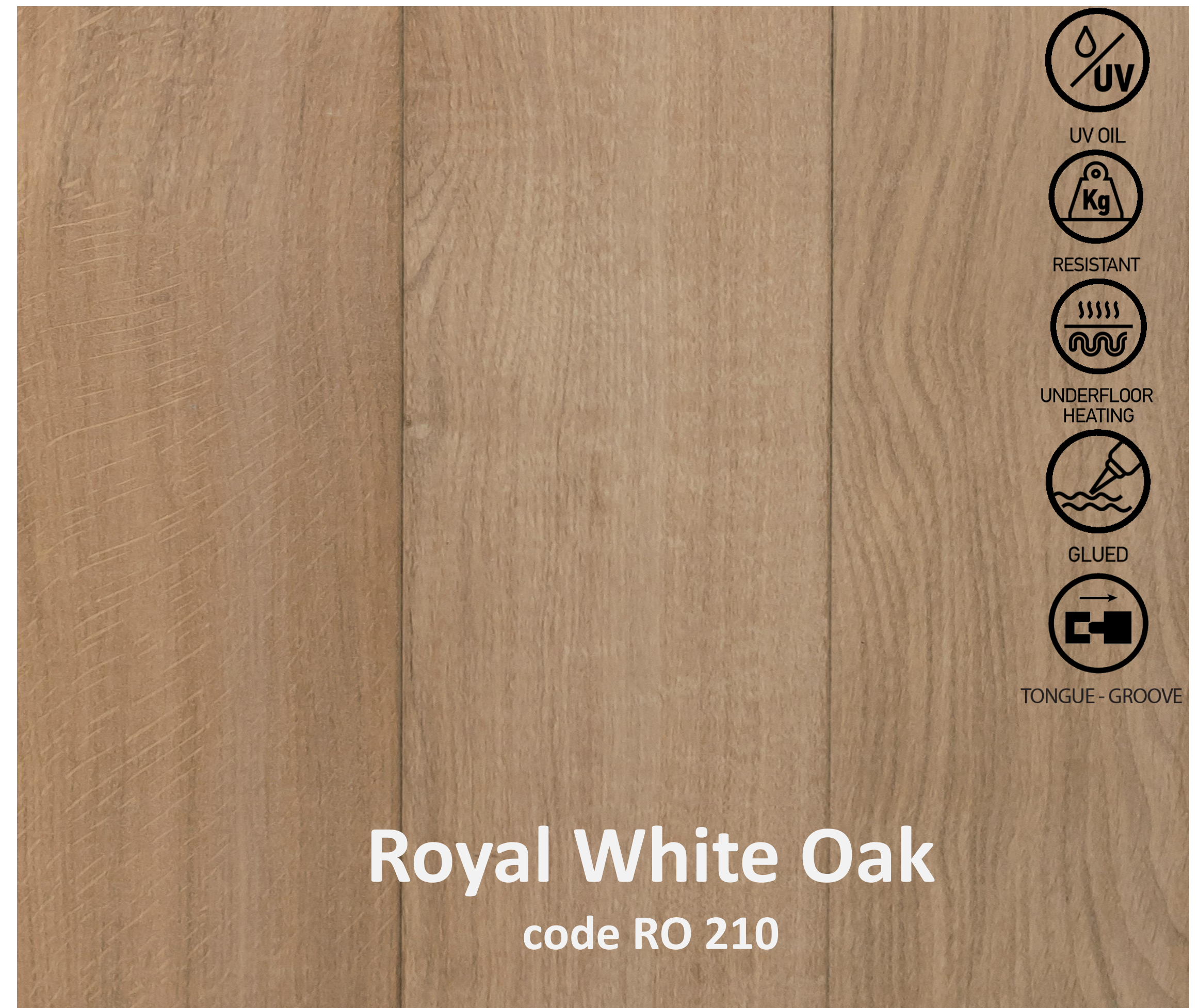
EDGES MACHINING

The double-layer floor is manufactured with beveled edges, with tongue & groove joint on all sides .

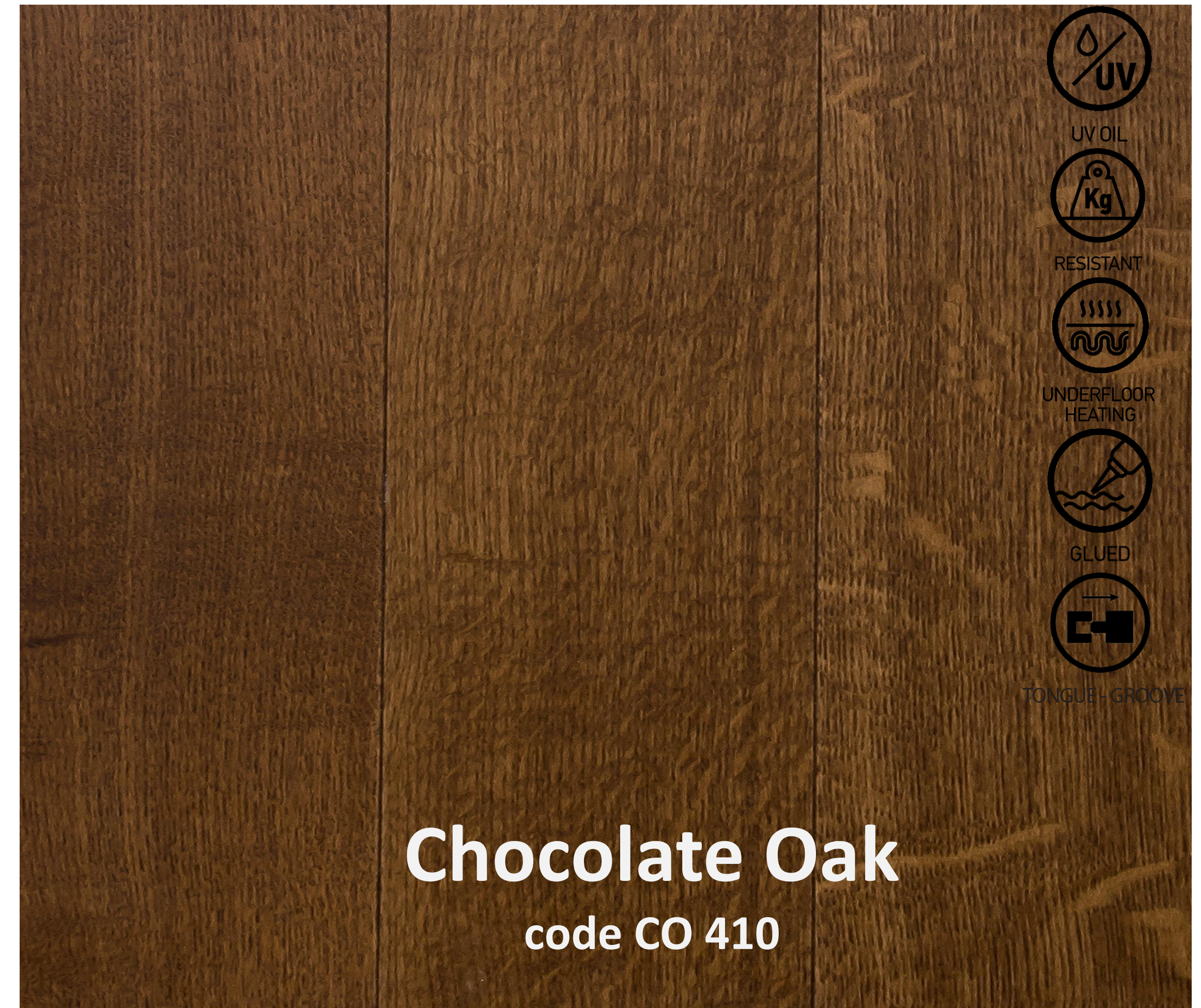
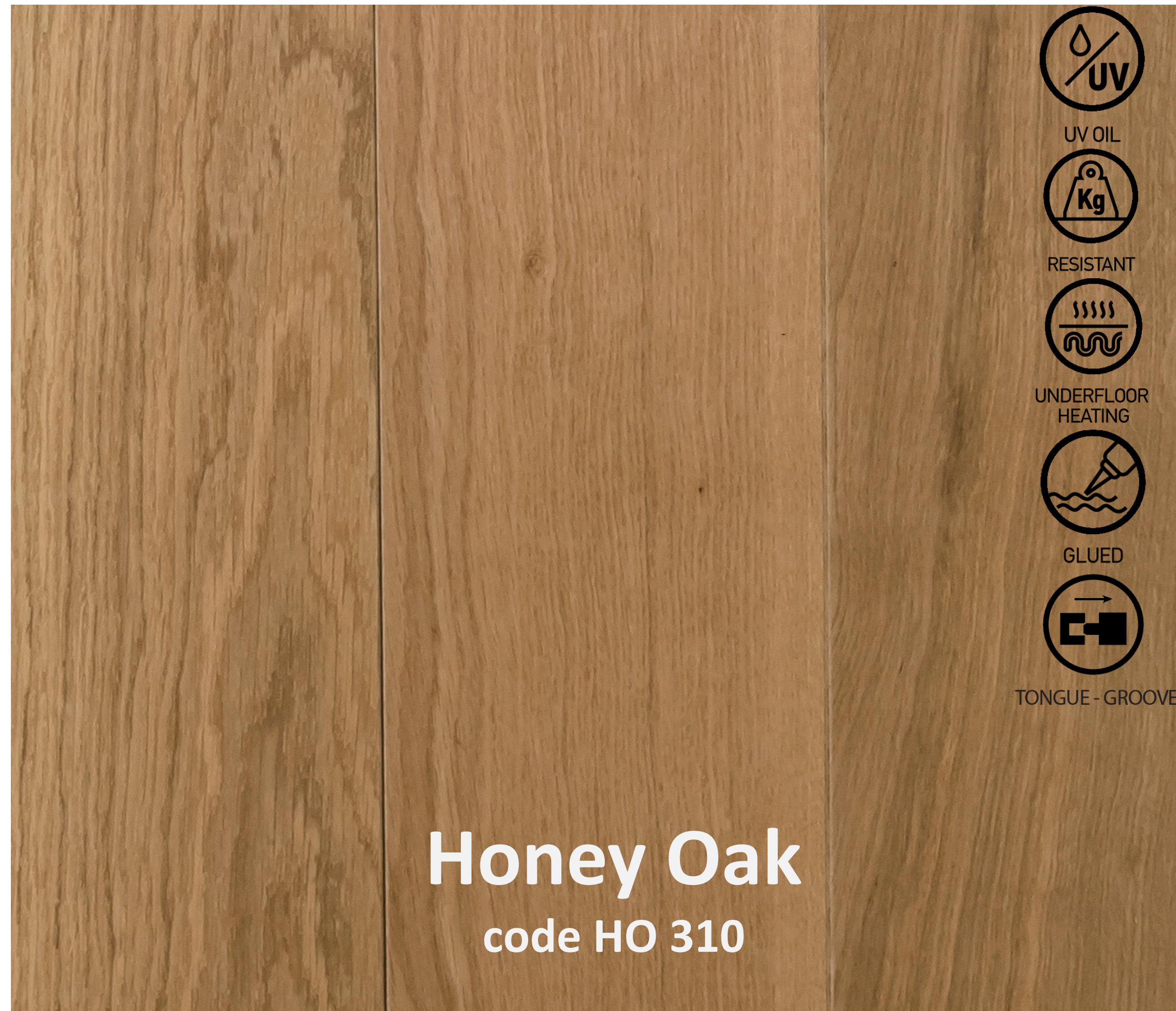


OUR COLLECTION

Engineered parquet is delivered unfinished, or finished with 5 types of UV oil:



OUR COLLECTION



OUR COLLECTION



OUR COLLECTION



QUALITY GRADES

EXTRA

Small and sound knots up to 5 mm of diameter. No sapwood. Relatively uniform colors.



NATUR

Filled knots up to 20 mm, light sapwood, variation of colors, slight stress cracks are possible.



QUALITY GRADES

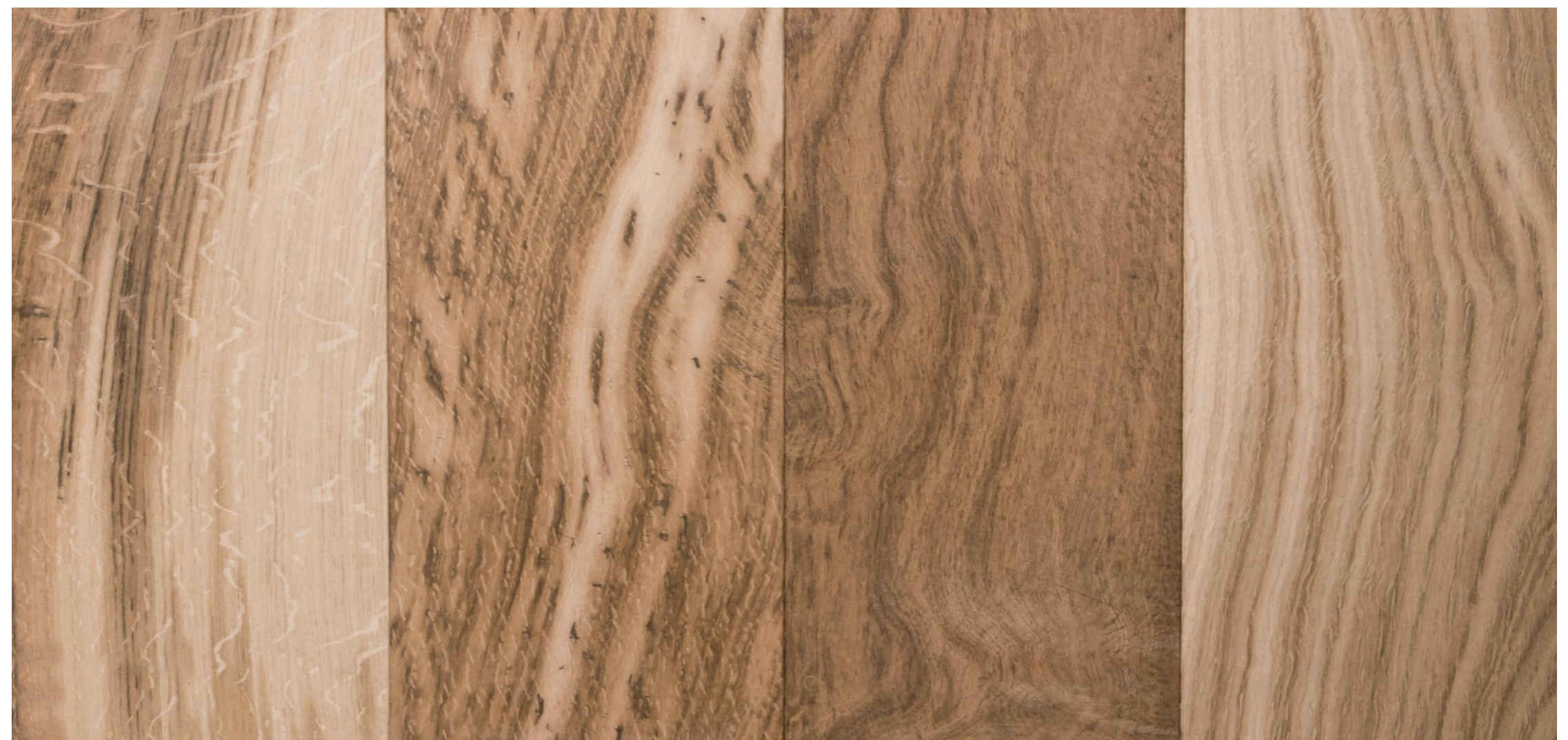
BR

Sound knots up to 60 mm ,
filled knots up to 40 mm,
filled cracks are allowed,
sapwood , discoloration allowed.



EXTRA D

It allows knots up to 30 mm ,
discoloration.



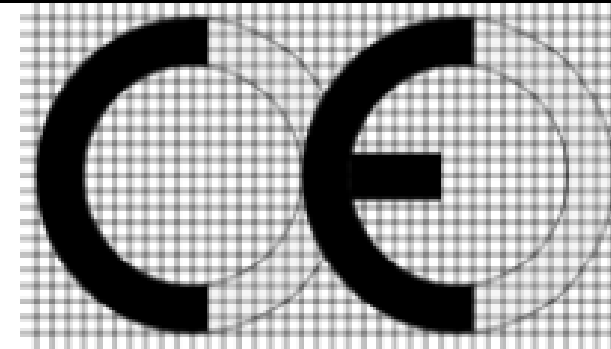
SURFACE TREATMENT



- ✓ To preserve the quality and beauty of your floor we recommend using Teflon furniture glides (PTFE) under chairs and furniture legs and doormats in entrances.
- ✓ Chair castors and office roller chairs must comply with standard EN 12529 .
- ✓ Use only lined rollers of type W (soft).
- ✓ It is also a good idea to use polycarbonate mats as underlay for armchairs and office chairs.
- ✓ Please note: Always wring out the cloth or mop very well before wiping the floor.
- ✓ DO NOT wet mop the parquet surface and NEVER leave puddles or standing water!

CERTIFICATION

ENGINEERED FLOOR- CE Marking:



**XYLOPAK SA
18**

**EN 14342:2013
ENGINEERED FLOOR
OAK, QUERCUS SPP./BIRCH PLYWOOD
(EN 13489:2003)**

Fire reaction	Dfl-s1/Cfl-s1
Densitaty	500/700 kg/m ³
Thickness	13/13,4 mm
Formaldehyde emission	E1
Slip resistance	NPD
Thermal resistivity	0,17 W/mK
Durability	Class 1, EN 335
Finition	Unfinished/Finished: UV Oil



Our Location

Kassandrou 1 , 59100

Veria , Greece



Our Website

www.xylopak.com



Our Phone

+30 23310 22267

+30 23310 20861

FAX: +30 23310 71511



Email

info@xylopak.com

