

TECHNICAL SHEET

ENGINEERED FLOOR – DOUBLE LAYER



Quality

The quality of the XYLOPAK S.A brand products is attested by the most important authorities such as CE , FSC



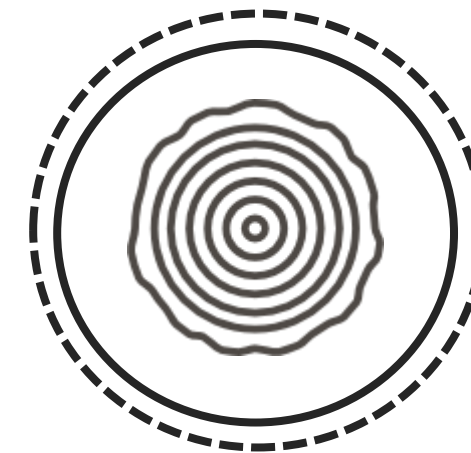
Tradition

XYLOPAK S.A industry is currently one of the most prestigious contemporary industries in the processing of wood in Greece. It was founded 50 years ago in Charopo Serres and it specializes exclusively in the production of solid oak parquet and engineered flooring, for the construction of wooden floor.



Technology

XYLOPAK's main goal is the perfection of its products . We achieve it through our perfect machinery , the constant training of our staff and the implementation of modern production methods .



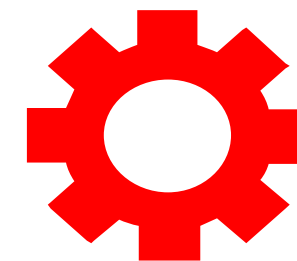
100% Wood

The wooden floors give credence to classic or modern and definitely noble and warm profile to professional venues or houses.

GENERAL CHARACTERISTICS



THE DOUBLE LAYER FLOOR is made by overlapping two layers of wood, oak and birch, with a heavy layer of 3,2 / 3,4 mm thick solid oak top layer and a high performance stability support layer of 10 mm thick **phenolic birch plywood**. Oak wood (Quercus spp.) comes from its own forestry exploitation in Romania, it is a hardwood species of deciduous tree, with high durability against aggressive factors. This new double-layer floor is made in a wide variety of colors, sizes and qualities.



FIELD OF USE

THE DOUBLE LAYER FLOOR is used for interior floors, heavy traffic, with superior selectivity requirements for outstanding design, remarkable technical performance, reliability, durability, thermal and acoustic comfort, eco-sanogenic properties.

BOTANICAL SPECIFICATIONS

Denomination	European Oak
Botanical denomination	Quercus Petraea Liebl.
Vegetation geographical area	Central and Western Europe
Wood weaving	Coarse\gross
Graining	Straight
Mass density at 12% humidity	600/800 kg/m3
Shrink	Medium
Dimensional stability	Medium-high
Hardness(Brinell penetration)	Medium-high
Durabilty (resistance to Fungus and bugs attacks)	Excellent for heartwood Mediocre for sapwood
Oxidation	Medium low , tends to conform from a yellowbrown to a Golden Yellow .



TECHNICAL QUALITY CONDITIONS

Quality standard: SR EN 13489:2003 Wood floors.
Elements of engineered multilayer floor

Deviations %	± 0,2 length ; ± 0,1 width
Moisture content %	7...11
Durability	Class 1 (SR EN 335)
Warranty, years	20/EXTRA; 15/NATUR; 10/BR; 5/EXTRA D, installed and maintained properly, excluding natural durability
Storage & Exploitation	18-25° C, RH 45-60%. To be kept sealed in the original package until installation!
Installation & Maintenance	According to the Installation Guide & Maintenance Guide



DIMENSIONAL SPECIFICATIONS



Width

120 mm/130 mm / 165 mm /
190 mm



Length

500 mm – 2200 mm



Thickness

13.2 mm / 13.4 mm



Top Layer (oak)

3.2 mm / 3.4 mm

EDGES MACHINING

The double-layer floor is manufactured with beveled edges, with tongue & groove joint on all sides .

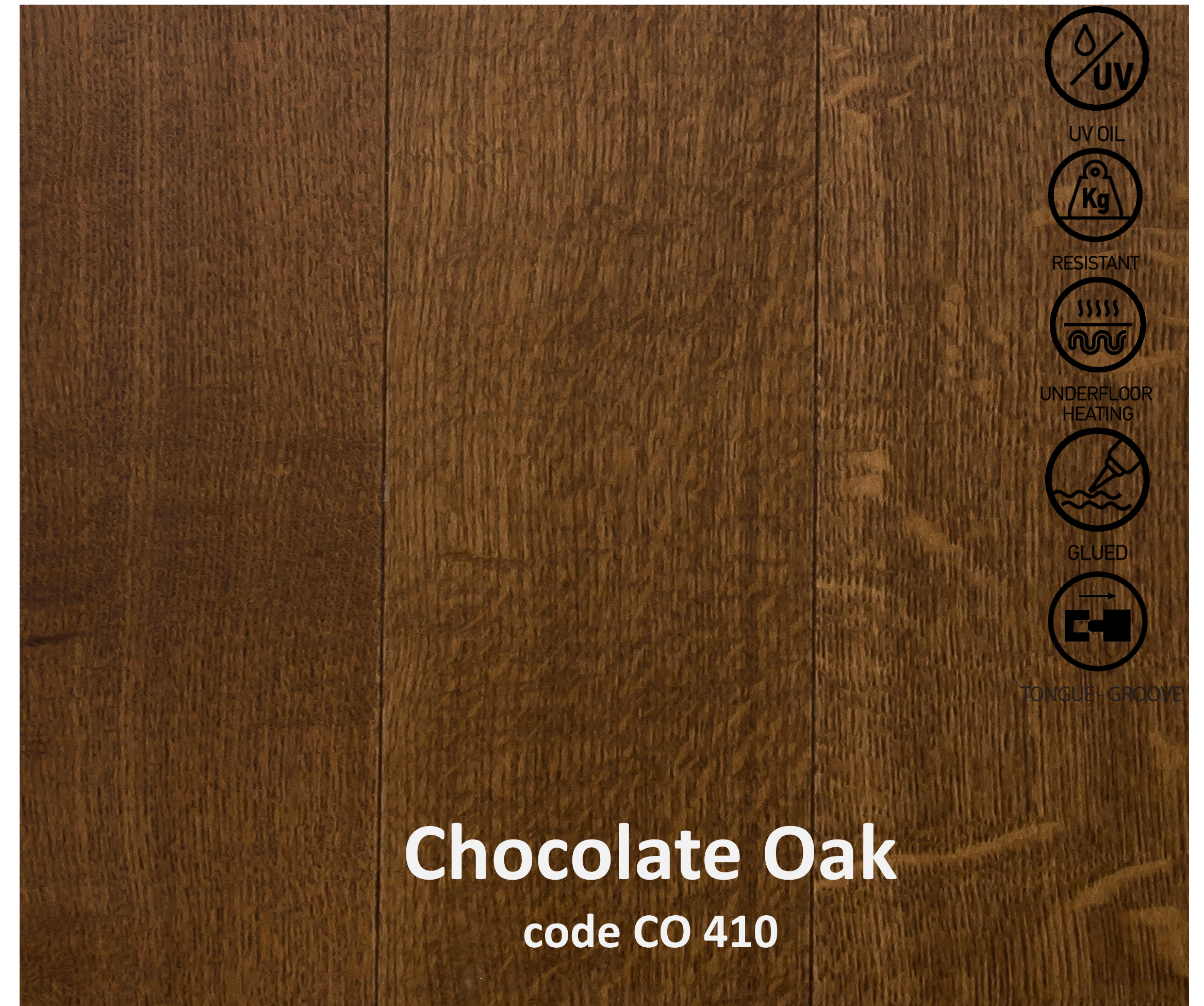


OUR COLLECTION

Engineered parquet is delivered unfinished, or finished with 5 types of UV oil:



OUR COLLECTION



OUR COLLECTION



OUR COLLECTION



Unfinished
Herringbone oak
code HE 710



Herringbone Honey oak
code HE 810

QUALITY GRADES

EXTRA

Small and sound knots up to 5 mm of diameter. No sapwood. Relatively uniform colors.



NATUR

Filled knots up to 20 mm, light sapwood, variation of colors, slight stress cracks are possible.



QUALITY GRADES

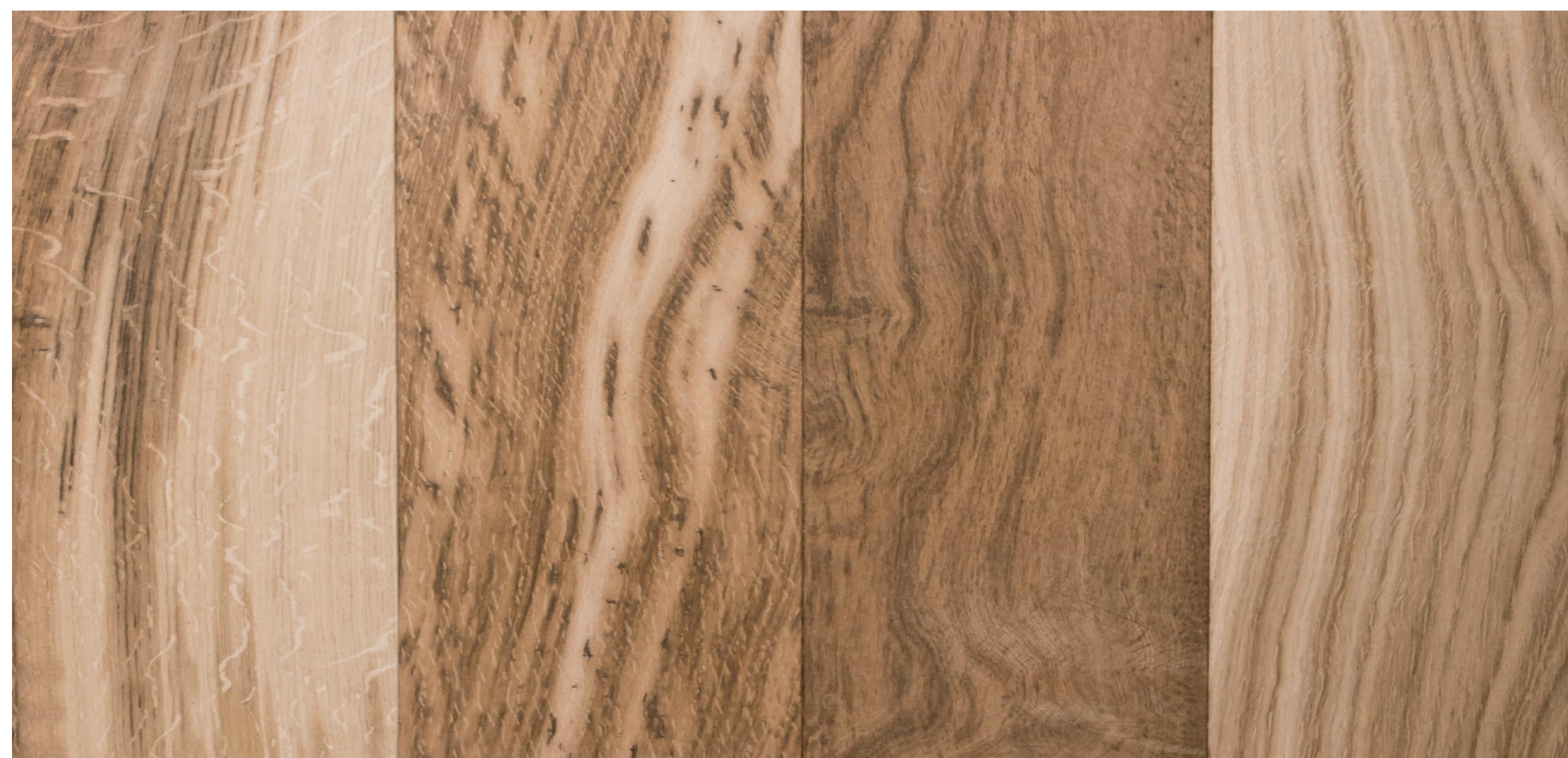
BR

Sound knots up to 60 mm ,
filled knots up to 40 mm,
filled cracks are allowed,
sapwood , discoloration allowed.



EXTRA D

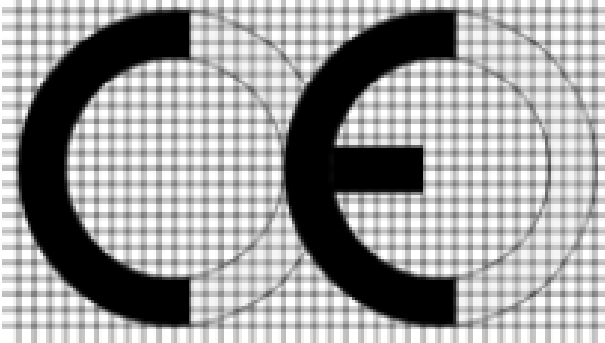
It allows knots up to 30 mm ,
discoloration.



SURFACE TREATMENT






- ✓ To preserve the quality and beauty of your floor we recommend using Teflon furniture glides (PTFE) under chairs and furniture legs and doormats in entrances.
- ✓ Chair castors and office roller chairs must comply with standard EN 12529 .
- ✓ Use only lined rollers of type W (soft).
- ✓ It is also a good idea to use polycarbonate mats as underlay for armchairs and office chairs.
- ✓ Please note: Always wring out the cloth or mop very well before wiping the floor.
- ✓ DO NOT wet mop the parquet surface and NEVER leave puddles or standing water!

	
XYLOPAK SA 18	
EN 14342:2013 ENGINEERED FLOOR OAK, QUERCUS SPP./BIRCH PLYWOOD (EN 13489:2003)	
Fire reaction	Dfl-s1/Cfl-s1
Densitaty	500/700 kg/m ³
Thickness	13/13,4 mm
Formaldehyde emission	E1
Slip resistance	NPD
Thermal resistivity	0,17 W/mK
Durability	Class 1, EN 335
Finition	Unfinished/Finished: UV Oil

XYLOPAK S.A obtained the FSC-STD-40-004 V3–O EN Certification. Chain of custody certification to guarantee the origin of the material from forest which are managed according to the strict environmental, social and economic standards required.



The mark of responsible forestry



Il marchio della gestione forestale responsabile
FSC® A000532

The mark of responsible forestry
FSC® A000532

CERTIFICATO N. RINA-COC-000334
CERTIFICATE No.

SI CERTIFICA CHE LA CATENA DI CUSTODIA DI
IT IS HEREBY CERTIFIED THAT CHAIN OF CUSTODY OF
XYLOPAK S.A.
Kassandrou Street, No. 1, Veria, Greece
NELLE SEGUENTI UNITA' OPERATIVE / IN THE FOLLOWING OPERATIONAL UNITS
Sidirokastro, Serres, Greece
E' CONFORME ALLA NORMA / IS IN COMPLIANCE WITH THE STANDARD
FSC®-COC
FSC-STD-40-004 V3-0

PER I SEGUENTI PRODOTTI / FOR THE FOLLOWING PRODUCTS

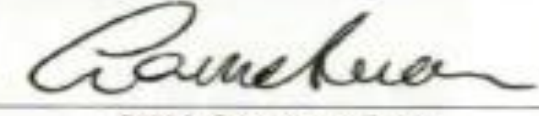
Nome del gruppo di prodotti secondo la FSC-STD-40-004 Name of group of products according to the FSC-STD-40-004	Processi produttivi / Production processes	Categorie di materiale FSC / FSC Material Categories (see FSC 100%, FSC Mix, FSC Recycled)
W11.5.2 - Parquet flooring	Manufacturing of wood flooring	FSC 100% FSC MIX
W11.5.3 - Plank flooring W11.5.4 - Wood-block flooring W11.5.5 - Engineered flooring		FSC 100%

Il presente certificato deve rimanere proprietà del RINA e tutte le copie o riproduzioni devono essere restituite o distrutte se richiesto dal RINA.
This certificate shall remain the property of RINA and all copies or reproductions of it shall be returned or destroyed if requested by RINA.
Questo certificato di per sé non costituisce un'evidenza che un particolare prodotto fornito dal titolare del certificato sia certificato FSC (o Legno Controllato FSC).
I prodotti offerti, spediti o venduti dal titolare del certificato possono essere considerati coperti solo dallo scopo di questo certificato quando la dichiarazione FSC richiesta è chiaramente indicata nelle fatture e nei documenti di trasporto.
This certificate itself does not constitute evidence that a particular product supplied by the certificate holder is FSC-certified (or FSC-Controlled Wood). Products offered, shipped or sold by the certificate holder can only be considered covered by the scope of this certificate when the required FSC claim is clearly stated on invoices and shipping documents.
La validità del presente certificato è subordinata a sorveglianza periodica annuale / semestrale ed al riesame completo della catena di custodia con periodicità quinquennale.
The validity of this certificate is dependent on an annual/semi-annual audit and on a complete review, every five years, of the chain of custody.
L'uso e la validità del presente certificato sono soggetti al rispetto del documento RINA: Regolamento per la Certificazione della Catena di Custodia dei prodotti di origine forestale.
The use and validity of this certificate are subject to compliance with the RINA document: Rules for the Certification of Chain of Custody of forest products.

Prima Emissione
First Issue
Emissione Corrente
Current Issue
Data scadenza
Expiry Date

24/11/2017
24/11/2017
23/11/2022

Laura Severino
Sustainability & Climate Change Unit Manager



RINA Services SpA
Via Corsica 12 - 16128 Genova Italy

La validità di questo certificato deve essere verificata sul sito
<http://info.fsc.org>

The validity of this certificate shall be verified on
<http://info.fsc.org>

Per l'elenco completo dei prodotti coperti dal certificato fare riferimento al database sul sito:
<http://info.fsc.org>

For the full list of product groups covered by the certificate refer to the database on the site:
<http://info.fsc.org>

form CERGE 08/13



Our Location

Kassandrou 1 , 59100

Veria , Greece



Our Website

www.xylopak.com



Our Phone

+30 23310 22267

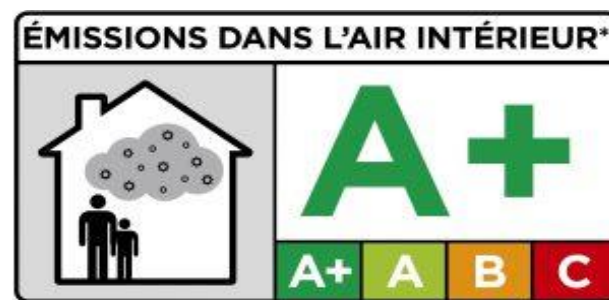
+30 23310 20861

FAX: +30 23310 71511



Email

info@xylopak.com



The mark of responsible forestry